

At Mazda we are committed to producing cars and trucks that are innovative, well engineered and of the highest quality.

The comprehensive New Vehicle Warranty detailed in this booklet is evidence of the confidence we have in our products and a continuing commitment to you as one of our customers.

Just like any fine machine, Mazda cars and trucks must be operated and maintained properly to ensure a long, trouble free life. This warranty booklet, together with your Owner's Manual, explains the proper operation and maintenance required to ensure your vehicle's proper performance and the validity of the warranty. Please take the time to read and follow these instructions carefully. If you do, we are confident that you can look forward to enjoyable and reliable service from your Mazda vehicle.

Your authorized Mazda dealer is another key to your future satisfaction with your vehicle. He knows your Mazda well because of the technical training we make available to him. He has the specialized tools and the genuine Mazda parts necessary to properly service your vehicle and most importantly, has a personal commitment to your continued satisfaction with the product you have purchased. We strongly recommend that you return to an authorized Mazda dealer for all your servicing needs.

Welcome to the Mazda family.

**Mazda Canada Inc.**  
**and**  
**Mazda Motor Corp.**



	Page
<b>Warranty Coverage at a Glance</b>	4
<b>Important</b>	5
<b>Vehicle and Owner Identification</b>	6
<b>When You Need to Talk to Mazda</b>	7
<b>New Vehicle Limited Warranty</b>	
• What is covered	10
• What is not covered	12
• Your responsibilities	14
• Other terms	15
<b>Distributor Powertrain Limited Warranty</b>	16
<b>Safety Restraint System Limited Warranty</b>	18
<b>Anti-Perforation Limited Warranty</b>	20
<b>Emission Control Warranty</b>	22
<b>Tire Limited Warranty</b>	28
<b>Replacement Parts and Accessories Limited Warranty</b>	29
<b>Mazda Distributors</b>	31
<b>Scheduled Maintenance Record</b>	33
<b>Registration of Ownership</b>	37
<b>Certificate of Transfer of Warranty</b>	40
<b>Change of Address or Subsequent Ownership Notification</b>	43

**Note:**

All information is based on the latest data available at the time of publication and, with the exception of the emissions warranty, is subject to change without notice.

# WARRANTY COVERAGE AT A GLANCE

4

		Warranty Term (Whichever comes first)								
		Months in Service	Km in Service							
			20,000	40,000	60,000	80,000	100,000	120,000	140,000	
<b>LIMITED WARRANTY</b>	<b>Service Adjustment</b>	12	20,000							
	<b>Basic</b>	36	80,000							
	<b>Original Equipment Battery</b>	36	100% for 12 months			Prorate through 36th month			(Unlimited)	
	<b>Powertrain</b>	60	100,000							
	<b>Safety Restraint</b>	60	100,000							
	<b>Perforation</b>	60	(Unlimited)							
<b>EMISSION WARRANTY</b>	<b>Emission Defect</b>									
	• Any Related Parts	36	80,000							
	• Specific Parts	96	128,000							
	<b>Emission Performance</b>									
• Any Related Parts	24	38,400								
• Specific Parts	96	128,000								
<b>Replacement Parts &amp; Accessories</b>		12	20,000							
			From Installation Date or Purchase Date							

This chart illustrates warranty coverage by time in service and distance driven. Please read the applicable pages for detailed information on what is covered and what is not covered under each of these warranties.

**Note:** Tires are warranted by the Tire Manufacturers.

**Please keep this booklet with your Mazda Vehicle.**

**This booklet should be presented to a Mazda Dealer if warranty service is needed.**

**This booklet should remain with your Mazda Vehicle, so if you sell it future owners will have this information.**

### **DEFINITIONS**

As used in this booklet (unless otherwise specifically stated),

“Mazda” means Mazda Motor Corporation, 3-1 Shintchi, Fuchu-cho, Aki-gun, Hiroshima, Japan and Mazda Canada Inc., 55 Vogell Road, Richmond Hill, Ontario, L4B 3K5, Canada.

“Mazda Vehicle” means a 2005 model year Mazda motor vehicle manufactured by or for Mazda.

“Mazda Distributor” means Mazda Canada Inc., 55 Vogell Road, Richmond Hill, Ontario, L4B 3K5, Canada.

“Mazda Dealer” means a person authorized by Mazda Distributor to service Mazda Vehicles or perform repairs under the warranties in this booklet.

“Mazda Accessory” means a Mazda genuine accessory or Mazda genuine optional equipment supplied by Mazda Distributor.



### Satisfaction Review Process

Your complete and permanent satisfaction is of primary concern to Mazda. All Mazda Dealers have both the knowledge and tools to keep your Mazda Vehicle in top condition. In our experience, any questions, problems, or complaints regarding the operation of your Mazda Vehicle or any other general service transactions are most effectively resolved by your dealer. If the cause of your dissatisfaction cannot adequately be addressed by normal dealership procedures, we recommend that you take the following steps:

#### Step 1: Contact the Mazda Dealer

Discuss the matter with a member of dealership management. If the Service Manager has already reviewed your concerns, contact the owner of the dealership or its General Manager.

#### Step 2: Contact the Mazda Regional Office

If you feel that you still require assistance, ask the dealer Service Manager to arrange for you to meet the local Mazda Service Representative. If more expedient, contact the Mazda Canada Inc. Regional Office nearest you for such arrangements. (Regional office addresses and phone numbers are shown on page 9.)

#### Step 3: Contact the Mazda Customer Relations Department

If still not substantially satisfied, contact the Customer Relations Department, Mazda Canada Inc., 55 Vogell Road, Richmond Hill, Ontario, L4B 3K5, Tel.: **1 (800) 263-4680**. Provide the Department with the following information:

1. Your name, address and telephone number
2. Year and model of vehicle
3. Vehicle Identification Number (VIN). Refer to the "Vehicle Identification" pages of the Owner's Manual for the location of the VIN.
4. Purchase date
5. Present odometer reading
6. Your dealer's name and location
7. The nature of your problem and/or cause of dissatisfaction

The Department, in cooperation with the local Mazda Service Representative, will review the case to determine if everything possible has been done to ensure your satisfaction.

Please recognize that the resolution of service problems in most cases requires the use of your Mazda Dealer's service facilities, personnel and equipment. We, therefore, urge you to follow the above three steps in sequence therefore for most effective results.

## **WHEN YOU NEED TO TALK TO MAZDA**

---

### **8**

#### **Mediation/Arbitration Program**

Occasionally a customer concern cannot be resolved through Mazda's Customer Satisfaction Program. If after exhausting the procedures in this warranty handbook your concern is still not resolved, you have another option.

Mazda Canada Inc. participates in an arbitration program administered by the Canadian Motor Vehicle Arbitration Plan (CAMVAP). CAMVAP will advise you about how your concern may be reviewed and resolved by an independent third party through binding arbitration.

Your complete satisfaction is the goal of Mazda Canada Inc. and our dealers. Mazda's participation in CAMVAP makes a valuable contribution to our achieving that goal. There is no charge for using CAMVAP. CAMVAP results are fast, fair and final as the award is binding on both you and Mazda Canada Inc.

#### **Canadian Motor Vehicle Arbitration Plan (CAMVAP)**

If a specific item of concern arises, where a solution cannot be reached between an owner, Mazda, and/or one of its dealers (that all parties cannot agree upon), the owner may wish to use the services offered by the Canadian Motor Vehicle Arbitration Plan (CAMVAP).

CAMVAP uses the services of Provincial Administrators to assist consumers in scheduling and preparing for their arbitration hearings. However, before you can proceed with CAMVAP you must follow your manufacturer's dispute resolution process as outlined previously.

CAMVAP is fully implemented in all provinces and territories. Consumers wishing to obtain further information about the Program can obtain an information booklet from your dealer, the Provincial Administrator or the Canadian Motor Vehicle Arbitration Plan Office at the address or telephone number shown below.

Canadian Motor Vehicle Arbitration Office  
235 Yorkland Boulevard, suite 300  
North York, Ontario  
M2J 4Y8

Provincial Administrator can be reached at:  
Tel: 1 (800) 207-0685

## WHEN YOU NEED TO TALK TO MAZDA

9

### Mazda Regional Offices

REGIONAL OFFICES	COVERING AREAS
<b>MAZDA CANADA INC. WESTERN REGION 8171 ACKROYD ROAD SUITE 2000 RICHMOND B.C. V6X 3K1 (604) 303-5670</b>	ALBERTA, BRITISH COLUMBIA, MANITOBA, SASKATCHEWAN, YUKON
<b>MAZDA CANADA INC. CENTRAL 55 VOGELL ROAD, RICHMOND HILL, ONTARIO, L4B 3K5 1 (800) 263-4680</b>	ONTARIO,
<b>MAZDA CANADA INC. QUEBEC REGION/ATLANTIC REGION 6111 ROUTE TRANS- CANADIENNE POINTE CLAIRE, QUEBEC H9R 5A5 (514) 694-6390</b>	QUEBEC NEW BRUNSWICK, NOVA SCOTIA, PRINCE EDWARD ISLAND, NEWFOUNDLAND

# NEW VEHICLE LIMITED WARRANTY

---

10

## What Is Covered

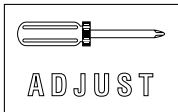
Mazda warrants that your new Mazda Vehicle is free from defects in material or workmanship, subject to the following terms and conditions. A Mazda Dealer will make necessary repairs, using new or remanufactured parts, to correct any problem covered by this warranty without charge to you.

## Basic Coverage Period

Any component of your new Mazda Vehicle is covered for **36 months** or **80,000 km**, whichever comes first, from the earlier date of either retail delivery or first use of the Mazda Vehicle.

## Exceptions

The items specified below are covered for the periods different from the basic coverage.



### ■ Adjustments

Service adjustment is covered for the first **12 months** or **20,000 km**, whichever comes first.

Service adjustment means minor repairs not usually associated with the replacement of parts, such as wheel balance and alignment, tension adjustment of automatic transmission throttle cable and V-belt, fitting of engine hood, trunk lid, or rear hatch, etc.

#### **Note:**

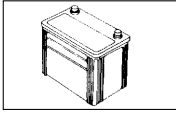
Adjustments required to conform to a province-approved emission short test, are subject to applicable emission warranty coverage.



### ■ Air Conditioner Refrigerant Charge

Air conditioner refrigerant charge is covered for the first **12 months** of the warranty period regardless of kilometrage.

Over the balance of the warranty period, refrigerant charge is covered only when replenished as part of a warranty repair.



### ■ Original Equipment Battery

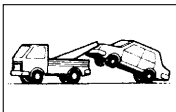
The originally equipped Battery is fully covered for the first **12 months** of the warranty period regardless of kilometrage. After **12 months** but within **24 months**, 50% of the replacement battery's suggested retail price will be your responsibility. After **24 months** but within **36 months**, 75% of the replacement battery's suggested retail price will be your responsibility. The rest, including labor charge, is covered by Mazda.

Months in Use	Parts		Labor	
	Customer pays	Mazda Pays	Customer Pays	Mazda Pays
0-12	0%	100%	0%	100%
13-24	50	50	0	100
25-36	75	25	0	100



### Mazda Added Protection

Additional Mechanical Repair Protection is available through your authorized Mazda Dealer. Ask for details.



### Towing/Roadside Assistance

Mazda's Roadside Assistance Program provides emergency assistance for your Mazda Vehicle during the first 3 years from the in-servicedate.

Towing will be provided to the nearest authorized Mazda Dealer.

Please refer to the Mazda Roadside Assistance Brochure for specific program information or call the nearest Mazda Dealer to request towing assistance.



### Warranty Application

This warranty is applicable to Mazda Vehicles registered and normally operated in Canada.

During the warranty period, this warranty is transferable to subsequent owners. Please use the "Subsequent Ownership Notification" attached to the end of the booklet to make this change. If you have any questions in this regard, please contact your Mazda Dealer for assistance.

# NEW VEHICLE LIMITED WARRANTY

---

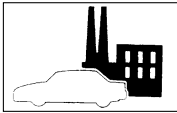
12

## What Is Not Covered

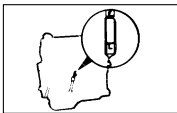


### Factors Beyond the Manufacturer's Control

- Misuse of the Mazda Vehicle such as driving over curbs, overloading, racing, snowplowing, etc. (Proper usage is described in your Owner's Manual.)
- Accidents such as collision, fire, theft, riot etc.
- Alteration, modification, tampering etc.
- If the vehicle has been classified a total loss and/or sold for salvage purposes or branded for any other reasons.



- Damage or surface corrosion from the environment such as:  
Acid rain, airborne fallout (chemicals, tree sap, etc), salt, road hazards, hail, wind storm, lightning, floods and other natural disasters.
- Cosmetic conditions or surface corrosion from stone chips or scratches in the paint.
- Removal of the vehicle from the warranty-applicable market for which it was produced.



### Damage due to Lack of Maintenance or the Use of Wrong Fuel, Oil or Lubricants

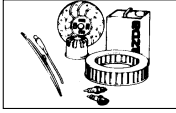
- Lack of proper maintenance as described in your Owner's Manual. (Failure to properly maintain your vehicle can result in your warranty being voided either in whole or in part.)
- Improper maintenance, the use of other than specified fuel, oil or other lubricants recommended in your Owner's Manual.



### Normal Deterioration

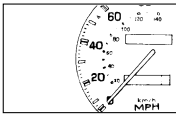
- Normal wear, tear or deterioration such as discolouration, fading, deformation, blurring etc.
- Surface corrosion on any part other than the body sheet metal panels forming the exterior appearance of a Mazda Vehicle.

## What Is Not Covered (Cont'd)



### Maintenance is at Owner's Expense

- Normal maintenance services such as cleaning and polishing, lubrication, and replenishment or replacement of oil, fluid, coolant, worn wiper blades, filters, worn brake and clutch linings, spark plugs, fuses, keyless transmitter batteries etc.
- Maintenance services described as "Scheduled Maintenance Services", "Owner Maintenance Services" or "Appearance Care" in your Owner's Manual.



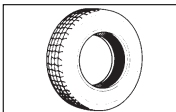
### Altered Kilometrage

- Any repair of a Mazda Vehicle on which the odometer has been altered or on which the actual distance traveled cannot be readily determined.  
(When replacing the speedometer, the "Speedometer Replacement Record" on page 6 must be filled in by a Mazda Dealer.)



### Extra Expenses and Damages

- Any financial loss, for example: payment made for loss of use of the Mazda Vehicle, lodging, car rentals, travel costs, loss of pay and any other expenses or damages.



### Tires

- Tires are warranted by the tire manufacturers. Refer to the "Tire Limited Warranty" on page 28 for a brief explanation or the tire warranty pamphlets provided with your Mazda Vehicle for details.

# **NEW VEHICLE LIMITED WARRANTY**

---

14

## **Your Responsibilities**

### **Maintenance**

You are responsible for properly operating and maintaining your Mazda Vehicle in accordance with the instructions and maintenance schedule described in your Owner's Manual.

### **Maintenance Records**

You should retain maintenance records since it may be necessary in some instances for you to show that the required maintenance has been performed.

The "Scheduled Maintenance Record" on page 33 should be filled in when scheduled maintenance is performed. Keep all receipts and make them available in case questions over maintenance arise.

### **To Get Warranty Service**

You must take your Mazda Vehicle, along with this booklet, to a Mazda Dealer in Canada or the United States during their normal service hours and prior to the expiration of the warranty period. While any of the Mazda Dealers will perform warranty service, Mazda recommends that you return to the dealership where you purchased your Mazda Vehicle because you have already established a relationship with them.

If you have any questions or need assistance regarding this warranty, refer to "When You Need to Talk to Mazda" on page 7.

### **Limited Liability**

The liability of Mazda under this warranty is limited solely to the repair or replacement of parts defective in Mazda-supplied material, or workmanship by a Mazda Dealer at its place of business. Specifically, it does not include any expense of, or payment for loss of use of the Mazda Vehicle during warranty repairs.

### Other Terms

This warranty gives you specific legal rights, and you may also have other rights which vary from province to province.

**All Implied Warranties, including but not limited to any regarding marketability or fitness for a particular purpose, are limited respectively to the duration of this warranty.**

**This warranty is given in lieu of all other Express Warranties (except those set forth separately in this booklet) on the part of Mazda, the Mazda Distributor, or the Mazda Dealer selling the Mazda Vehicle. No dealer, or any agent or employee thereof, is authorized to extend or expand this warranty. Mazda or the Mazda Distributor shall not be liable for any incidental, special, consequential, or exemplary damages, or any service not expressly provided for herein.**

Some provinces do not allow limitations on how long an implied warranty lasts or the exclusion or limitation of incidental or consequential damages, so the above limitations or exclusions may not apply to you.

# DISTRIBUTOR POWERTRAIN LIMITED WARRANTY

16

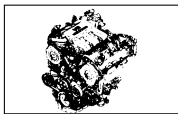
Mazda Distributor warrants that the powertrain components of your new Mazda Vehicle are free from defects in material or workmanship, subject to the following terms and conditions:

A Mazda Dealer will make necessary repairs, using new or remanufactured parts to correct any problem covered by this warranty without charge to you.



## Warranty Period

The warranty period starts upon expiration of the New Vehicle **36 month/80,000 km** Limited Warranty and ends at **60 months** from the earlier date of either retail delivery or first use of the Mazda Vehicle, or at the time the Mazda Vehicle has been driven **100,000 km**, whichever comes first.

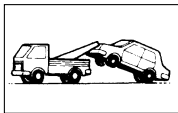


## Components Covered

The following is a general list of components covered by this warranty:

(See Page 17 for specific components covered.)

- Engine
- Transmission
- Transaxle
- Drivetrain



## Towing

If your Mazda Vehicle is not driveable because of a problem covered by this warranty, call the nearest Mazda Dealer for towing assistance. Towing service will be covered to the nearest Mazda Dealer.



## Warranty Application

This warranty is applicable to Mazda Vehicles, distributed by Mazda Canada Inc., registered and normally operated in Canada.

During the warranty period, this warranty is transferable to subsequent owners at no charge. Please use the "Change of Address" or "Subsequent Ownership Notification" form in the Warranty Information Booklet to make this change. If you have any questions in this regard, please contact your Mazda Dealer for assistance.

## **What Is Not Covered/Your Responsibilities/Limited Liability/Other Terms**

The “What is Not Covered”, “Your Responsibilities”, “Limited Liability” and “Other Terms” are the same as stated for the New Vehicle Limited Warranty section of this booklet.

## **Powertrain Warranty Parts List**

Listed below are the powertrain components covered under the Distributor Powertrain Limited Warranty:

### **Rotary Engine (For RX-8)**

Rotor Housings, Eccentric Shaft, Side Housings, Stationary Gears, Rotors, Main Bearings, Tension Bolts, Intake Manifold, Front Cover, Flywheel, Oil Pan, Oil Pump, Oil Pump Chain, Metering Oil Pump, Engine Mounts, Gaskets and Seals.

### **Reciprocating Engine (For All Except RX-8)**

Cylinder Block, Head and All Internal Parts, Timing Cover, Gears, Sprockets and Timing Chain or Belt, Intake Manifold, Flywheel and Pilot Bearing, Oil Pump and Chain, Valve Cover, Oil Pan, Oil Cooler, Engine Mounts, Gaskets and Seals.

### **Transmission/Transaxle**

Trans. Case and All Internal Parts, Torque Converter, Trans. Mounts, External Oil Cooler, Gaskets and Seals.

### **Drivetrain**

Differential Housing and All Internal Parts, Drive Axle and Constant Velocity Joints, Propeller Shaft, Centre Bearing and Universal Joints, Internally Lubricated Bearings, Boots, Gaskets and Seals.

# **SAFETY RESTRAINT SYSTEM LIMITED WARRANTY**

18

**To help decrease the possibility or severity of injury during accidents or emergency stops, Mazda strongly recommends that the driver and all vehicle occupants be properly restrained at all times by using the seat belts provided. (Proper use is outlined in your Owner's Manual.)**

**In addition to the seat belts, many Mazda Vehicles are equipped with supplemental restraint systems (air bags). Air bags are designed to supplement the seat belts by providing additional protection by restraining the forward motion in a more serious frontal accident. The air bags alone may not prevent severe injury in an accident. The driver and all vehicle occupants should always wear seat belts.**

Mazda warrants that the safety restraint system of your new Mazda Vehicle is free from defects in Mazda-supplied material or workmanship which result in improper function, subject to the following terms and conditions.

A Mazda Dealer will make necessary repairs, using new parts, to correct any problem covered by this warranty without charge to you.

## **1. Warranty Period**

The warranty period is for the first **60 months** or **100,000 Km**, whichever comes first, from the earlier date of either retail delivery or first use of the Mazda Vehicle.

During the warranty period, this warranty is transferable to subsequent owners. Please use the "Subsequent Ownership Notification" attached to the end of the booklet to make this change. If you have any question in this regard, please contact your Mazda Dealer for assistance.

## **2. What Is Covered**

Seat Belts and Related Components  
Air Bag System

## **3. What Is Not Covered**

Repair or replacement required due to misuse, negligence, improper repair/adjustment, alteration, or accident/collision damage.

Replacement of proper functioning part for comfort or appearance.

Incidental or consequential damages such as loss of use of your Mazda Vehicle, inconvenience or commercial loss.

If the vehicle has been classified a total loss and/or sold for salvage purposes or branded for any other reasons.

Removal of the vehicle from the warranty-applicable market for which it was produced.

### **4. To Get Warranty Service**

You must take your Mazda Vehicle as soon as possible, along with this booklet, to any Mazda Dealer in Canada or the United States during their normal service hours, if a problem exists.

If you have any questions or need assistance regarding this warranty, refer to “When You Need to Talk to Mazda” on page 7.

### **5. Limited Liability**

The liability of Mazda under this warranty is limited solely to the repair or replacement of parts defective in Mazda-supplied material, or workmanship by a Mazda Dealer at its place of business. Specifically, it does not include any expense of, or related to, transportation to such a dealer or payment for loss of use of the Mazda Vehicle during warranty repairs.

### **6. Other Terms**

The “Other Terms” stated on page 15 in the New Vehicle Limited Warranty also apply to this warranty.

# **ANTI-PERFORATION LIMITED WARRANTY**

---

20

Mazda warrants that the body sheet metal panels of your new Mazda Vehicle are free from defects in material or workmanship which result in perforation (a hole through the body panel) due to corrosion, subject to the following terms and conditions. Corrosion other than perforation (a hole through the body panel), due to defects in material or workmanship, is covered under the New Vehicle Limited Warranty.

A Mazda Dealer will either repair or replace any body sheet metal panel perforated due to defects in material or workmanship, under normal use, without charge to you.

## **1. Warranty Period**

The warranty period is for the first **60 months** (regardless of kilometrage) from the earlier date of either retail delivery or first use of the Mazda Vehicle. During the warranty period, this warranty is transferable without charge to subsequent owners. Please use the “Subsequent Ownership Notification” attached to the end of the booklet to make this change. If you have any questions in this regard, please contact your Mazda Dealer for assistance.

## **2. What Is Not Covered**

- Any perforation due to corrosion of the Mazda Vehicle which is caused by industrial fallout, accident, damage, abuse, vehicle modifications or cargo that is damaging or corrosive to the Mazda Vehicle.
- Any surface corrosion of the Mazda Vehicle which does not result in perforation, such as that typically caused by sand, salt, hail or stones.
- Any perforation due to corrosion of the Mazda Vehicle which results, not from a defect in material or workmanship, but from failure to maintain the Mazda Vehicle in accordance with the procedures specified in item 3 (Your Responsibilities) of this warranty and the Owner’s Manual provided with your Mazda Vehicle.
- Any perforation due to corrosion of a part of the Mazda Vehicle which is not a body sheet metal panel. As used herein, “body sheet metal panel” specifically excludes all parts which are components of the exhaust system of the Mazda Vehicle.
- Any perforation to panels previously repaired to correct collision damage, fire, theft, natural disaster, etc.
- Removal of the vehicle from the warranty-applicable market for which it was produced.
- If the vehicle has been classified a total loss and/or sold for salvage purposes or branded for any other reasons.

### 3. Your Responsibilities

Inspect the body sheet metal panels of your Mazda Vehicle frequently and if you detect any stone chips or scratches in the paint or protective coating, touch them up immediately.

In addition, special care should be taken to protect your Mazda Vehicle from corrosion.

- 1) If you drive on salted roads, or if you drive near the ocean, flush the underbody at least once a month with clean water.
- 2) It is important to keep the drain holes in the lower edges of the body clear.
- 3) If your Mazda Vehicle is damaged due to an accident or any event which may cause damage to the paint, have your Mazda Vehicle repaired as soon as possible.
- 4) If you carry special cargo, such as chemicals, fertilizers, de-icing salt, or other corrosive substances, be sure that such materials are well packaged and sealed.
- 5) If you drive frequently on gravel roads, we recommend that you install stone guards behind each wheel.

### 4. To Get Warranty Service

You must take your Mazda Vehicle, along with this booklet, to any Mazda Dealer in Canada or the United States during their normal service hours. If you have any questions or need assistance regarding this warranty, refer to “When You Need to Talk to Mazda” on page 7.

### 5. Limited Liability

The liability of Mazda under this warranty is limited solely to the repair or replacement of parts defective in material or workmanship by a Mazda Dealer at its place of business. Specifically, it does not include any expense of, or related to, transportation to such a dealer or payment for loss of use of the Mazda Vehicle during warranty repairs.

### 6. Other Terms

The “Other Terms” stated on page 15 in the New Vehicle Limited Warranty also apply to this warranty.

# EMISSION CONTROL WARRANTY

---

22

## I. Introduction

The following two emission-related warranties are provided:

- Emissions Defect Warranty, which covers certain parts of each vehicle's emissions control systems against defects in materials and workmanship, and
- Emissions Performance Warranty, which covers repairs to certain parts of each vehicle's emission control systems *if certain conditions are met* (see Sec. V, below, for those conditions).

These two emissions warranties apply to all Mazda Vehicles registered and normally operated in Canada. They are given in lieu of all other express or implied warranties (except those set forth separately in this booklet) on the part of Mazda, Mazda Importer/Distributor or the Mazda Dealer selling this Mazda Vehicle. No dealer, or any agent or employee thereof, is authorized to extend or expand these warranties.

## II. Definitions

- (a) "Owner" means the original and any subsequent owner of a Mazda Vehicle.
- (b) "Mazda Part" means a part sold by a Mazda Dealer, whether new or remanufactured, which is supplied by Mazda.
- (c) "Emission Warranty Part" means a part installed on or in a Mazda Vehicle by or at the direction of Mazda for the sole or primary purpose of reducing the Mazda Vehicle's emissions and that was not in general use prior to model year 1968. The Emission Warranty Parts are listed in Secs. VI and VII, below.
- (d) "Written Maintenance Instructions" means those maintenance and operation instructions, together with the time and/or kilometrage interval at which such maintenances are to be performed, specified in the Owner's Manual for the Mazda Vehicle as being necessary to assure compliance of the Mazda Vehicle with applicable emission standards during the term of this warranty, as specified by law.

### III. Exclusions from the Emission Warranties

The following are NOT covered by these Emissions Warranties:

- (1) Any incidental, consequential, or exemplary damages (whether in contract or tort), including loss of time, inconvenience, loss of use of the vehicle, cost of transporting it for repair or service, and commercial loss.
- (2) Damage resulting from accidents misuse, natural disaster, or events beyond the control of Mazda.
- (3) If the vehicle has been classified a total loss and/or sold for salvage purposes or branded for any other reasons.
- (4) Lack of proper maintenance, including repairs improperly performed or replacements improperly installed by any person other than a Mazda Dealer, or a replacement part or accessory not conforming to Mazda's specifications.
- (5) Any repair of the vehicle on which the odometer kilometrage has been altered or on which the actual kilometrage cannot be readily determined. (When replacing the speedometer, the "Speedometer Replacement Record" on page 6 must be filled in by a Mazda Dealer.)
- (6) Removal of the vehicle from the warranty-applicable market for which it was produced.

### IV. Emission Defect Warranty

Mazda warrants to the ultimate purchaser and each subsequent purchaser that this Mazda Vehicle is (A) designed, built, and equipped so as to conform at the time of sale with applicable regulations, and (B) free from defects in materials and workmanship which would cause it to fail to conform with applicable regulations during the warranty periods mentioned herein after. The applicable regulation requires that the warranty period is for the first 24 months\* or 38,400 km, whichever comes first. However, Mazda will provide you a coverage of **36 months\* or 80,000 km**, whichever comes first, under the terms of the New Vehicle Limited Warranty. The applicable regulation also requires that the warranty period for specific major Emission Warranty Parts listed in Sec.VII below is for the first **96 months\* or 128,000 km**, whichever comes first.

\* The months during which the vehicle has been in operation are counted from the date of first use of the vehicle or the date of its retail delivery, whichever came first. Any defects in warranted parts that are identified within those warranty periods will be repaired or replaced by Mazda, as its option, with new or remanufactured parts at no cost to the Mazda Vehicle owner by a Mazda Dealer in Canada. The liability of Mazda under this Emission Defect Warranty is solely limited to such repair or replacement.

# EMISSION CONTROL WARRANTY

---

24

## V. Emission Performance Warranty

### Important Notice:

A remedy will be available under this warranty only when a vehicle fails a province-approved emission short test; usually this means when an Owner could be subject to a penalty under provincial law because of such a failure. At the date of the printing of this warranty, many provinces did not have vehicle inspection programs for testing vehicles for conformity with such short tests and had not enacted laws subjecting vehicle Owners to such penalties. Therefore, it is possible that in many provinces or local areas, no remedy will be available under this warranty as a matter of law.

### A. Warranty

Mazda warrants to each Owner that if:

- (a) The Mazda Vehicle is maintained and operated in compliance with the Written Maintenance Instructions; and
- (b) The Mazda Vehicle fails to conform at any time during the term of this warranty to the applicable emission standards as judged by an emission test approved by a province; and
- (c) Such nonconformity results or will result in the Owner having to bear any penalty or other sanction (including the denial of the right to use the Mazda Vehicle) under local, or provincial law; and
- (d) If such nonconformity results from the failure of an Emission Warranty Part,

Mazda shall remedy the nonconformity at no cost to the Owner in accordance with the following:

- During a period of vehicle operation that does not exceed **24 months\* or 38,400 km**, whichever comes first, if the failed Emission Warranty Part is listed in the 24 months/38,400 km Emission Warranty Parts List in Section VI, below.
- During a period of vehicle operation that does not exceed **96 months\* or 128,000 km**, whichever comes first, if the failed Emission Warranty Part is listed in the 96 months/128,000 km Emission Warranty Parts List in Section VII, below.

\* The months during which the vehicle has been in operation are counted from the date of first use of the vehicle or the date of its retail delivery, whichever came first.

### **B. Compliance with Written Maintenance Instructions**

Each Owner is required to comply with the Written Maintenance Instructions and a claim under this warranty may be denied on the basis of noncompliance by the Owner with such instructions. **If and when it is considered that the vehicle's non-conformity with the applicable emission standards has resulted from the Owner's non-compliance with those Written Maintenance Instructions which the manufacturer considers necessary for the vehicle to meet the standards, the Owner may be required to submit evidence of such compliance. Receipts and other documents covering the performance of Scheduled Maintenance and proper use in accordance with the Written Maintenance Instructions, including but not limited to the validated Scheduled Maintenance Record in this booklet, should, therefore, be retained by the Owner and should be transferred to each subsequent Owner of the Mazda Vehicle.**

### **C. Use of Mazda Parts**

The Mazda Vehicle is designed, built and tested using Mazda Parts so that the Mazda Vehicle is able to perform in conformity with provincial regulations as provided by this warranty. Accordingly, it is recommended that any replacement parts used for maintenance, repair or replacement of the Mazda Vehicle be Mazda Parts, or parts equivalent to those with which the Mazda Vehicle or its engine was originally equipped.

### **D. Use of Non-Mazda Parts**

Owners may elect to use parts other than Mazda Parts in the performance of any maintenance or repairs and such use in itself will not invalidate this warranty. However, use of parts other than Mazda, may cause Mazda to deny an emission performance warranty claim on the basis of non-Mazda replacement parts used in the maintenance or repair of a Mazda Vehicle if the non-Mazda replacement parts are either defective in material or workmanship or not equivalent, from an emission standpoint, to Mazda Parts.

### **E. Repair or Replacement by Mazda Dealer**

Mazda's obligation to remedy nonconformities under this warranty shall be performed by a Mazda Dealer, which shall make all adjustments, repairs or replacements necessary to assure that the Mazda Vehicle complies with applicable emission standards of a province and that the Mazda Vehicle will continue to comply during the remainder of the term of this warranty (if proper maintenance and operation are continued).

## **EMISSION CONTROL WARRANTY**

---

26

### **F. Maintenance by An Establishment or Individual Other Than Mazda**

**Maintenance, replacement, or repair of the emission control devices and systems covered by this warranty may be performed by any automotive repair establishment or individual using Mazda Parts.** However, the Owner should note that service by a person other than a Mazda Dealer may cause Mazda to deny a claim under this warranty, if it is shown that the improper installation or adjustment of any part has caused the Mazda Vehicle to fail the emission test, either directly or by causing another warranted part to fail.

### **G. Warranty Claim Procedures**

A warranty claim may be submitted by bringing the Mazda Vehicle to any Mazda Dealer during the Dealer's regular business hours, together with a copy of a failed emissions test. Upon presentation of a claim, Mazda shall notify the Owner within 30 days, or a shorter period of time within which repair is required by local, or provincial law, that the claim will be honored or shall provide the Owner in writing with an explanation of the basis upon which the claim is being denied. Failure to notify the Owner within such a time period, shall cause Mazda to be responsible for repairing the Mazda Vehicle free of charge to the Owner, unless such failure is attributable to the Owner or to events beyond the control of Mazda or the Mazda Dealer.

## VI. 24 months/38,400 km Emission Warranty Parts List

### Air/Fuel Metering System

- Closed loop system
  - Oxygen sensor
  - Air flow sensor (Air flow meter)
  - Fuel injectors
- Cold start enrichment system
  - Cold start injector
- Electronic idle speed control system
  - Idle air control valve (Idle speed control valve)
  - Air valve
- Deceleration controls

### Ignition Spark Advance/Retard System

- Certain spark advance/retard control components
  - High energy electronic ignition
  - Spark plugs\*

### Fuel Evaporative System

- Canister and associated control valve
  - Purge valve
  - Purge solenoid
  - Fuel filler cap

### Positive Crankcase Ventilation (PCV) System

- PCV valve

### Exhaust Gas Recirculation (EGR) System

- EGR function control valve (EGR control valve) and associated parts
  - EGR valve
  - EGR valve control solenoid

### Secondary Air Injection System

- Air pump
- Air control valves and distribution pipes

### Miscellaneous Items Used in Above Systems

- Hoses, clamps, fittings, gaskets, sealing materials, tubing, brackets and belts
- Exhaust pipe (between exhaust manifold and catalyst)
- Sensors, switches and valves

\* Spark plugs are warranted under the basic warranty or until the first required maintenance, whichever comes first.

## VII. 96 months/128,000 km Emission Warranty Parts List

- Catalytic Converter
- Electronic Emissions Control Unit
- Onboard Emissions Diagnostic Device (Incorporated into Electronic Emission Control Unit)

# TIRE LIMITED WARRANTY

---

28

The originally equipped tires are warranted by the tire manufacturer. Refer to the separate tire warranty pamphlet in the glove box for details.

## 1. To Get Warranty Service

To obtain warranty service, you are responsible for presenting the unserviceable tire to any authorized dealer of the tire manufacturer in Canada or the United States. For the location of authorized tire dealers, refer to your local telephone directory. Your Mazda Dealer may also assist you in obtaining warranty service from the tire manufacturer.

## 2. Tire Warrantor

To obtain detailed tire warranty information or for customer service, contact the appropriate tire warrantor listed below.

### **The Respective Tire Warrantors are:**

#### **Bridgestone/Firestone Canada Inc.**

5770 Hurontario Street, Suite 400  
Mississauga, ON. L5R 3G5, Canada  
1-800-267-1318

#### **Dunlop Tires (Canada) Inc. / Goodyear Canada Inc.**

450 Kipling Avenue  
Toronto, ON. M8Z 5E1, Canada  
1-800-387-3288  
416-201-7997

#### **Yokohama Tire (Canada) Inc.**

2445 Canoe Avenue  
Coquitlam, B.C. V3K 6A9, Canada  
1-800-387-4924 (Ontario)  
1-800-661-4033 (Western Canada)  
1-800-361-9444 (Quebec/Maritimes)

#### **Michelin North America (Canada) Inc.**

2540 Boulevard Daniel-Johnson  
Laval, Quebec H7T 2T9, Canada  
1-800-461-8473 (All provinces except Quebec)  
1-800-565-7638 (Quebec)

#### **Toyo Tire Canada Inc.**

1645 Cliveden Avenue  
Burnaby, B.C. V3N 4V2, Canada  
1-604-540-1331  
1-800-434-8696 (Western Canada)  
1-800-668-5429 (Ontario)  
1-800-363-0199 (Quebec/Maritimes)

# REPLACEMENT PARTS AND ACCESSORIES LIMITED WARRANTY

The Mazda Distributor warrants that Mazda genuine replacement parts and Mazda Accessories are free from defects in material or workmanship, subject to the following terms and conditions.

This warranty covers Mazda genuine new or remanufactured replacement parts and Mazda Accessories sold by a Mazda Dealer. This includes Mazda Accessories installed by a Mazda Dealer or a Mazda Distributor prior to the retail delivery of a new Mazda Vehicle.

## 1. Warranty Period

Mazda genuine replacement parts (other than the battery) and Accessories sold and replaced/installed by a Mazda Importer/Distributor or a Mazda Dealer are covered for the first 12 months/20,000 km from the installation date or the duration of the New Vehicle 36 months/80,000 km Limited Warranty, whichever is longer. If the parts or Accessories are sold but not installed by a Mazda Dealer, they are covered for the first 12 months/20,000 km from the purchase date, excluding labor charge.

### Note:

Parts or accessories replaced/installed under warranty are covered for the time remaining in the New Vehicle 36 months/80,000 km Limited Warranty.

Mazda genuine replacement battery sold by a Mazda Importer/Distributor or a Mazda Dealer is fully covered for the first 24 months from the installation date regardless of mileage and a pro-rated warranty applies after 24 months but within 60 months, excluding labor charge.

Refer to the chart below.

Months in Use	Parts (Retail price)		Labor	
	Customer pays	Mazda pays	Customer pays	Mazda pays
0 - 24	0%	100%	100%	0
25 - 36	50	50	100	0
37 - 48	70	30	100	0
49 - 60	80	20	100	0

# REPLACEMENT PARTS AND ACCESSORIES LIMITED WARRANTY

---

30

## 2. What Is Not Covered

- Damage or corrosion due to accident, collision, fire, theft, natural disaster, etc.
- Damage or surface corrosion from the environment such as acid rain, airborne fall-out (chemicals, tree sap), stones, salt, road hazards, hail, wind storm, lightning, floods and other natural disaster.
- Normal wear, tear or deterioration such as discoloration, fading, deformation, blurring etc.
- Air conditioner refrigerant charge after the first 12 months, unless replenished as part of a warranty repair.
- Replacement batteries. (Consult with your Mazda Dealer for the separate battery warranties.)
- Replacement parts or accessories installed on any Mazda Vehicle registered or normally operated outside of Canada.
- Replacement parts or accessories installed on a Mazda Vehicle in which the odometer has been altered, or on which the actual kilometrage cannot be readily determined.
- Replacement parts or accessories used in applications for which they are not designed.
- Replacement parts or accessories installed improperly by a dealer or distributor other than Mazda Canada or a Mazda dealer.
- Any replacement part or accessory without proof of purchase or replacement date.
- Non-Mazda replacement parts or accessories which Mazda Dealers may sell or install on your Mazda Vehicle.
- If the vehicle has been classified a total loss and/or sold for salvage purposes or branded for any other reasons.
- Removal of the vehicle from the warranty-applicable market for which it was produced.

## 3. To Get Warranty Service

You must take your Mazda Vehicle, along with this booklet and proof of purchase or replacement date, to a Mazda Dealer in Canada or the United States during their normal service hours.

If you have any questions or need assistance regarding this warranty, refer to “When You Need to Talk to Mazda” on page 7.

## 4. Limited Liability

The liability of a Mazda Distributor under this warranty is limited solely to the repair or replacement of parts defective in material or workmanship by a Mazda Dealer at their place of business, and specifically does not include any expense of, or related to, transportation to such a dealer or payment for loss of use of the Mazda Vehicle during warranty repairs.

## 5. Other Terms

The “Other Terms” stated on page 15 in the New Vehicle Limited Warranty also apply to this warranty.

**CANADA**

**Mazda Canada, Inc.**

55 Vogell Road,  
Richmond Hill, Ontario,  
L4B 3K5, Canada

TEL: 1 (800) 263-4680 (In Canada)  
(905) 787-7000 (Outside of Canada)

**U.S.A. MAINLAND & HAWAII**

**Mazda North American Operations**

7755, Irvine Center Drive  
Irvine, CA 92618-2922, U.S.A.  
P.O. Box 19734  
Irvine, CA 92623-9734, U.S.A.

TEL: 1 (800) 222-5500 (In the U.S.A.)  
(949) 727-1990 (Outside of the U.S.A.)

**PUERTO RICO**

**Plaza Motors Corp.**

**(Mazda de Puerto Rico)**

P.O. Box 362722  
San Juan  
Puerto Rico 00936-2722  
TEL: (787) 641-9300

## **MAZDA DISTRIBUTORS**

---

32

### **GUAM**

**Triple J Enterprises, Inc.**

**(d.b.a. Triple J Motors)**

P.O. Box 6066,

Tamuning, Guam 96931

TEL: (671) 646-9126

### **SAIPAN**

**Pacific International Marianas, Inc.**

**(d.b.a. Midway Motors)**

P.O. Box 887

Beach Road Saipan

MP 96950

TEL: (670) 234-7524

**Triple J Saipan, Inc.**

**(d.b.a. Triple J Motors)**

P.O. Box 500487

Saipan

MP 96950-0487

TEL: (670) 235-4868

### **AMERICAN SAMOA**

**Polynesia Motors, Inc.**

P.O. Box 1120, Pago Pago, American Samoa 96799

TEL: (684) 699-1854

# SCHEDULED MAINTENANCE RECORD

The service record below has been designed to include the signature of your Mazda Dealer representative or other repair establishment representative. This signed form is evidence of completion of scheduled maintenance services and should be kept with the receipts, repair orders, and invoices in the glove box. All records should be given to any subsequent owner of the Mazda Vehicle. **Failure to properly maintain your vehicle can result in your warranty being voided either in whole or in part.**

## Scheduled Maintenance Intervals

For your reference, the basic interval for scheduled maintenance is 8,000 km. Refer to your Owner's Manual to make sure of the complete schedule.

Pre-Delivery Inspection	<b>3</b>	Kilometrage/Month Service
Kilometrage:	Kilometrage:	
R.O. No./Date:	R.O. No./Date:	
Authorized Signature:	Authorized Signature:	
Dealership:	Dealership:	

<b>1</b>	Kilometrage/Month Service	<b>4</b>	Kilometrage/Month Service
Kilometrage:		Kilometrage:	
R.O. No./Date:		R.O. No./Date:	
Authorized Signature:		Authorized Signature:	
Dealership:		Dealership:	

<b>2</b>	Kilometrage/Month Service	<b>5</b>	Kilometrage/Month Service
Kilometrage:		Kilometrage:	
R.O. No./Date:		R.O. No./Date:	
Authorized Signature:		Authorized Signature:	
Dealership:		Dealership:	

# SCHEDULED MAINTENANCE RECORD

---

34

---

**6**                      Kilometrage/Month Service

Kilometrage: \_\_\_\_\_

R.O. No./Date: \_\_\_\_\_

Authorized Signature: \_\_\_\_\_

Dealership: \_\_\_\_\_

---

**10**                      Kilometrage/Month Service

Kilometrage: \_\_\_\_\_

R.O. No./Date: \_\_\_\_\_

Authorized Signature: \_\_\_\_\_

Dealership: \_\_\_\_\_

---

**7**                      Kilometrage/Month Service

Kilometrage: \_\_\_\_\_

R.O. No./Date: \_\_\_\_\_

Authorized Signature: \_\_\_\_\_

Dealership: \_\_\_\_\_

---

**11**                      Kilometrage/Month Service

Kilometrage: \_\_\_\_\_

R.O. No./Date: \_\_\_\_\_

Authorized Signature: \_\_\_\_\_

Dealership: \_\_\_\_\_

---

**8**                      Kilometrage/Month Service

Kilometrage: \_\_\_\_\_

R.O. No./Date: \_\_\_\_\_

Authorized Signature: \_\_\_\_\_

Dealership: \_\_\_\_\_

---

**12**                      Kilometrage/Month Service

Kilometrage: \_\_\_\_\_

R.O. No./Date: \_\_\_\_\_

Authorized Signature: \_\_\_\_\_

Dealership: \_\_\_\_\_

---

**9**                      Kilometrage/Month Service

Kilometrage: \_\_\_\_\_

R.O. No./Date: \_\_\_\_\_

Authorized Signature: \_\_\_\_\_

Dealership: \_\_\_\_\_

---

**13**                      Kilometrage/Month Service

Kilometrage: \_\_\_\_\_

R.O. No./Date: \_\_\_\_\_

Authorized Signature: \_\_\_\_\_

Dealership: \_\_\_\_\_

# SCHEDULED MAINTENANCE RECORD

---

**14**                      Kilometrage/Month Service

---

Kilometrage: \_\_\_\_\_

---

R.O. No./Date: \_\_\_\_\_

---

Authorized Signature: \_\_\_\_\_

---

Dealership: \_\_\_\_\_

---

**18**                      Kilometrage/Month Service

---

Kilometrage: \_\_\_\_\_

---

R.O. No./Date: \_\_\_\_\_

---

Authorized Signature: \_\_\_\_\_

---

Dealership: \_\_\_\_\_

---

**15**                      Kilometrage/Month Service

---

Kilometrage: \_\_\_\_\_

---

R.O. No./Date: \_\_\_\_\_

---

Authorized Signature: \_\_\_\_\_

---

Dealership: \_\_\_\_\_

---

**19**                      Kilometrage/Month Service

---

Kilometrage: \_\_\_\_\_

---

R.O. No./Date: \_\_\_\_\_

---

Authorized Signature: \_\_\_\_\_

---

Dealership: \_\_\_\_\_

---

**16**                      Kilometrage/Month Service

---

Kilometrage: \_\_\_\_\_

---

R.O. No./Date: \_\_\_\_\_

---

Authorized Signature: \_\_\_\_\_

---

Dealership: \_\_\_\_\_

---

**20**                      Kilometrage/Month Service

---

Kilometrage: \_\_\_\_\_

---

R.O. No./Date: \_\_\_\_\_

---

Authorized Signature: \_\_\_\_\_

---

Dealership: \_\_\_\_\_

---

**17**                      Kilometrage/Month Service

---

Kilometrage: \_\_\_\_\_

---

R.O. No./Date: \_\_\_\_\_

---

Authorized Signature: \_\_\_\_\_

---

Dealership: \_\_\_\_\_

---

**21**                      Kilometrage/Month Service

---

Kilometrage: \_\_\_\_\_

---

R.O. No./Date: \_\_\_\_\_

---

Authorized Signature: \_\_\_\_\_

---

Dealership: \_\_\_\_\_

# SCHEDULED MAINTENANCE RECORD

---

36

---

**22**                      Kilometrage/Month Service  
Kilometrage: \_\_\_\_\_  
R.O. No./Date: \_\_\_\_\_  
Authorized Signature: \_\_\_\_\_  
Dealership: \_\_\_\_\_

---

**26**                      Kilometrage/Month Service  
Kilometrage: \_\_\_\_\_  
R.O. No./Date: \_\_\_\_\_  
Authorized Signature: \_\_\_\_\_  
Dealership: \_\_\_\_\_

---

**23**                      Kilometrage/Month Service  
Kilometrage: \_\_\_\_\_  
R.O. No./Date: \_\_\_\_\_  
Authorized Signature: \_\_\_\_\_  
Dealership: \_\_\_\_\_

---

**27**                      Kilometrage/Month Service  
Kilometrage: \_\_\_\_\_  
R.O. No./Date: \_\_\_\_\_  
Authorized Signature: \_\_\_\_\_  
Dealership: \_\_\_\_\_

---

**24**                      Kilometrage/Month Service  
Kilometrage: \_\_\_\_\_  
R.O. No./Date: \_\_\_\_\_  
Authorized Signature: \_\_\_\_\_  
Dealership: \_\_\_\_\_

---

**28**                      Kilometrage/Month Service  
Kilometrage: \_\_\_\_\_  
R.O. No./Date: \_\_\_\_\_  
Authorized Signature: \_\_\_\_\_  
Dealership: \_\_\_\_\_

---

**25**                      Kilometrage/Month Service  
Kilometrage: \_\_\_\_\_  
R.O. No./Date: \_\_\_\_\_  
Authorized Signature: \_\_\_\_\_  
Dealership: \_\_\_\_\_

---

**29**                      Kilometrage/Month Service  
Kilometrage: \_\_\_\_\_  
R.O. No./Date: \_\_\_\_\_  
Authorized Signature: \_\_\_\_\_  
Dealership: \_\_\_\_\_

## Registration of Ownership/Owner's Copy

### Enregistrement de propriété/exemplaire du propriétaire

Vehicle Identification Number Numéro d'identification du véhicule	Date of Delivery (Mo. Day, Yr.) Date de livraison (mois jour année)	Key No. No de la clé	Telephone No. No de téléphone
Owner's Name Nom du propriétaire	Mr. M.	Mrs. Mme	Ms. Mlle
Owner's Address Adresse du propriétaire	Street Rue	Province Province	Postal Code Code postal
	City Ville		

I acknowledge that I have received Mazda Manufacturer's Warranty and Owner's responsibilities, and that my selling dealer has explained to me:

- 1) Terms and conditions of warranty.
- 2) Importance of required maintenance service.

I have, visually, inspected the Mazda Vehicle as delivered to me, and it appears to be in satisfactory condition.

Je reconnais avoir compris la garantie Mazda et la responsabilité incombant au propriétaire et que mon concessionnaire m'a fourni les explications:

- 1) De la durée et des conditions de la garantie:
- 2) De l'importance du service d'entretien requis:

J'ai inspecté visuellement le véhicule Mazda livré qui apparaît être en état satisfaisant.

Owner's Signature

Signature du propriétaire

Dealer's Name and Signature

Nom et signature du concessionnaire

## Registration of Ownership/Dealer's Copy

### Enregistrement de propriété/exemplaire du concessionnaire

Vehicle Identification Number Numéro d'identification du véhicule	Date of Delivery (Mo. Day, Yr.) Date de livraison (mois jour année)		Key No. No de la clé	Telephone No. No de téléphone
Owner's Name Nom du propriétaire	Mr. M.	Mrs. Mme	Ms. Mlle	
Owner's Address Adresse du propriétaire	Street Rue		Province Province	Postal Code Code postal
	City Ville			

I acknowledge that I have received Mazda Manufacturer's Warranty and Owner's responsibilities, and that my selling dealer has explained to me:

- 1) Terms and conditions of warranty.
- 2) Importance of required maintenance service.

I have, visually, inspected the Mazda Vehicle as delivered to me, and it appears to be in satisfactory condition.

Je reconnais avoir compris la garantie Mazda et la responsabilité incombant au propriétaire et que mon concessionnaire m'a fourni les explications:

- 1) De la durée et des conditions de la garantie;
- 2) De l'importance du service d'entretien requis;

J'ai inspecté visuellement le véhicule Mazda livré qui apparaît être en état satisfaisant.

Owner's Signature

Signature du propriétaire

Dealer's Name and Signature

Nom et signature du concessionnaire

## Registration of Ownership/Distributor's Copy

### Enregistrement de propriété/exemplaire du distributeur

Vehicle Identification Number Numéro d'identification du véhicule	Date of Delivery (Mo. Day, Yr.) Date de livraison (mois jour année)	Key No. No de la clé	Telephone No. No de téléphone
Owner's Name Nom du propriétaire	Mr. M. Mrs. Mme Ms. Mlle		
Owner's Address Adresse du propriétaire	Street Rue	Province Province	Postal Code Code postal
	City Ville		

I acknowledge that I have received Mazda Manufacturer's Warranty and Owner's responsibilities, and that my selling dealer has explained to me:

- 1) Terms and conditions of warranty.
  - 2) Importance of required maintenance service.
- I have, visually, inspected the Mazda Vehicle as delivered to me, and it appears to be in satisfactory condition.

Je reconnais avoir compris la garantie Mazda et la responsabilité incombant au propriétaire et que mon concessionnaire m'a fourni les explications:

- 1) De la durée et des conditions de la garantie;
  - 2) De l'importance du service d'entretien requis;
- J'ai inspecté visuellement le véhicule Mazda livré qui apparaît être en état satisfaisant.

Owner's Signature

Signature du propriétaire

Dealer's Name and Signature

Nom et signature du concessionnaire

Keep this card at distributor on behalf of Mazda Motor Corporation for five years from date of delivery.

Au nom de la Mazda Motor Corporation, conserver cette carte chez le distributeur pendant cinq ans à compter de la date de livraison.

## Certificate of Transfer of Warranty/Owner's Copy

### Avis de transfert de garantie/exemptaire du propriétaire

We hereby advise of the transfer of warranty from the original owner to the new owner below.  
 Par la présente nous vous avisons du transfert de la garantie du premier propriétaire au nouveau propriétaire mentionné ci-dessous.

Dealer's Name Nom du concessionnaire			
Dealer's Signature Signature du concessionnaire			
Vehicle Identification Number Numéro d'identification du véhicule		Original Date of Delivery 1ère date de vente	Date of Transfer Date de transfert
			km
Original Owner's Name Nom du premier propriétaire	Mr. M.	Mrs. Mme	Ms. Mlle
Address Adresse	Street Rue	City Ville	Province Province
New Owner's Name Nom du nouveau propriétaire	Mr. M.	Mrs. Mme	Ms. Mlle
Address Adresse	Street Rue	City Ville	Province Province
New Owner's Signature Signature du nouveau propriétaire			Postal Code Code postal

From:

De:

To:

À:

## Certificate of Transfer of Warranty/Dealer's Copy

### Avis de transfert de garantie/exemptaire du concessionnaire

We hereby advise of the transfer of warranty from the original owner to the new owner below.

Par la présente nous vous avisons du transfert de la garantie du premier propriétaire au nouveau propriétaire mentionné ci-dessous.

Dealer's Name Nom du concessionnaire					
Dealer's Signature Signature du concessionnaire					
Vehicle Identification Number Numéro d'identification du véhicule		Original Date of Delivery 1ère date de vente		Date of Transfer Date de transfert	km
Original Owner's Name Nom du premier propriétaire		Mr. M.	Mrs. Mme	Ms. Mlle	
Address Adresse		Street Rue		City Ville	Province Province
New Owner's Name Nom du nouveau propriétaire		Mr. M.	Mrs. Mme	Ms. Mlle	Postal Code Code postal
Address Adresse		Street Rue		City Ville	Province Province
New Owner's Signature Signature du nouveau propriétaire				Postal Code Code postal	

From:

De:

To:

À:

## Certificate of Transfer of Warranty/Distributor's Copy

### Avis de transfert de garantie/exemplaire du distributeur

We hereby advise of the transfer of warranty from the original owner to the new owner below.  
 Par la présente nous vous avisons du transfert de la garantie du premier propriétaire au nouveau propriétaire mentionné ci-dessous.

<b>Dealer's Name</b> Nom du concessionnaire					
<b>Dealer's Signature</b> Signature du concessionnaire					
<b>Vehicle Identification Number</b> Numéro d'identification du véhicule	<b>Original Date of Delivery</b> 1ère date de vente		<b>Date of Transfer</b> Date de transfert		km
<b>Original Owner's Name</b> Nom du premier propriétaire	<b>Mr.</b> M.	<b>Mrs.</b> Mme	<b>Ms.</b> Mlle		
<b>Address</b> Adresse	<b>Street</b> Rue		<b>City</b> Ville	<b>Province</b> Province	<b>Postal Code</b> Code postal
<b>New Owner's Name</b> Nom du nouveau propriétaire	<b>Mr.</b> M.	<b>Mrs.</b> Mme	<b>Ms.</b> Mlle		
<b>Address</b> Adresse	<b>Street</b> Rue		<b>City</b> Ville	<b>Province</b> Province	<b>Postal Code</b> Code postal
<b>New Owner's Signature</b> Signature du nouveau propriétaire					

From:

De:

To:

À:

## Change of Address or Subsequent Ownership Notification Notification de changement d'adresse ou de changement de propriétaire

---

In case of a change in your address or if you purchased your Mazda Vehicle as a used vehicle, please complete this form and mail it.

En cas de changement d'adresse ou si vous avez acheté un véhicule Mazda d'occasion, veuillez remplir cette carte et l'envoyer.

Mr  Mrs  Miss  Co  Fleet  
M                      Mlle                      Mlle                      Flottes

.....

Last Name, First Name  
Nom, Prénom

.....

Street Address

Rue  
.....

City  
Ville

Province  
Province

.....

Postal Code  
Code postal

.....

Vehicle Identification Number

Numéro d'identification du véhicule

Change /  Purchase date  
Date de changement                      Date d'achat

.....

Month    Day    Year  
Mois    Jour    Année

The above information is very important in order to contact you concerning recall information should such a situation occur.

Les renseignements ci-dessus sont très importants pour permettre de vous contacter pour informations, si nécessaire.

## Change of Address or Subsequent Ownership Notification Notification de changement d'adresse ou de changement de propriétaire

---

In case of a change in your address or if you purchased your Mazda Vehicle as a used vehicle, please complete this form and mail it.

En cas de changement d'adresse ou si vous avez acheté un véhicule Mazda d'occasion, veuillez remplir cette carte et l'envoyer.

Mr  Mrs  Miss  Co  Fleet  
M                      Mlle                      Mlle                      Flottes

.....

Last Name, First Name  
Nom, Prénom

.....

Street Address

Rue  
.....

City  
Ville

Province  
Province

.....

Postal Code  
Code postal

.....

Vehicle Identification Number

Numéro d'identification du véhicule

Change /  Purchase date  
Date de changement                      Date d'achat

.....

Month    Day    Year  
Mois    Jour    Année

The above information is very important in order to contact you concerning recall information should such a situation occur.

Les renseignements ci-dessus sont très importants pour permettre de vous contacter pour informations, si nécessaire.

BUSINESS REPLY — RÉPONSE D'AFFAIRES  
No Postage Stamp Necessary if Mailed in Canada  
Se poste sans timbre au Canada

POSTAGE WILL BE PAID BY  
LE PORT SERA PAYÉ PAR

**MAZDA CANADA INC.**  
Attention: Service Department  
55 Vogell Road,  
Richmond Hill, Ontario,  
L4B 3K5



BUSINESS REPLY — RÉPONSE D'AFFAIRES  
No Postage Stamp Necessary if Mailed in Canada  
Se poste sans timbre au Canada

POSTAGE WILL BE PAID BY  
LE PORT SERA PAYÉ PAR

**MAZDA CANADA INC.**  
Attention: Service Department  
55 Vogell Road,  
Richmond Hill, Ontario,  
L4B 3K5

